

# student Guide étudiant

Hello!



2023-2024



université  
de BORDEAUX

# Book your accommodation with Studapart

## University of Bordeaux HOUSING SERVICE on a single platform

- › **Exclusive ads** for all budgets offered to students of the University of Bordeaux
- › **Verified ads and secure payment**
- › **Simplified rental file** and 100% online procedures

### Don't have a guarantor?

Renting in France without a French guarantor can be a hassle. Studapart can become your guarantor throughout the entire duration of your rent.



© Baring - Adobe Stock

[u-bordeaux.studapart.com/en](https://u-bordeaux.studapart.com/en)



New students: with your personal email + the activation code HOUSINGUBDX  
Current University of Bordeaux students: with your IDNUM account

### NEED HELP?

Contact our team of multilingual experts (French, English, Mandarin, Hindi...) on the platform through live chat or email:

[booking@studapart.com](mailto:booking@studapart.com) or **01 80 92 64 01** (toll-free call from abroad)

# Summary

## → Choose the University of Bordeaux

### → Your studies

The Higher Education System .....	55
Registration and tuition fees .....	56
Come to France .....	57
Learning resources .....	58
Aquipass card: a student card and much more... ..	59
University libraries .....	60
Improve your French! .....	62
Language centres .....	62
Support for students with specific needs .....	64
From university to your 1 <sup>st</sup> job .....	65
Applying for disabled worker status during your studies .....	66

### → Daily life

Social .....	69
Finance .....	70
Accommodation .....	72
Transport .....	74
Harassment, Discrimination, and Violence How to react? .....	75
Healthcare .....	76
Student Health Centre .....	77
Catering (Bon appétit !) .....	78
Student jobs at the university .....	80

### → Campus life

Culture .....	83
Sport .....	84
Citizenship and commitment .....	85
Student and Campus Life Contribution (CVEC) .....	86

### → Your contacts

At your arrival .....	89
Checklist .....	90
All your contacts .....	91
Practical information .....	95

# Choose the University of Bordeaux!



## Multidisciplinary study programmes

- **Four major scientific fields:**
  - Science and technology
  - Law, political science, economics, management
  - Life and health sciences
  - Social and human sciences
- **250 Master programmes, 150 Bachelor programmes (incl. vocational)**

## International study programmes

Around 70 international study programmes at Bachelor, Master and Doctorate level

## Research of excellence

11 departments bringing together 90 laboratories, institutes and technical platforms, in almost 50 scientific disciplines

## Open to the world

Nearly 700 partner universities based in over 80 countries worldwide.

## Dynamic campus and welcome services

- › One of the largest campus sites (over 187 hectares) in Europe, with a wide range of services and amenities.
- › "3 star" rating for the Campus France "Choose France" label, in recognition of the high-quality welcome services for international students.



**+52,000**  
students



One of  
**the largest** campus  
sites in Europe



**1**  
foundation



**7,200**  
international  
students



**28 ha**  
of sport fields



**38**  
libraries with  
4,000 reading  
places



**8**  
doctoral schools



**3,800** research and  
teaching staff  
*including 800 international  
researchers*



**135** student  
associations



**2,000**  
doctoral students



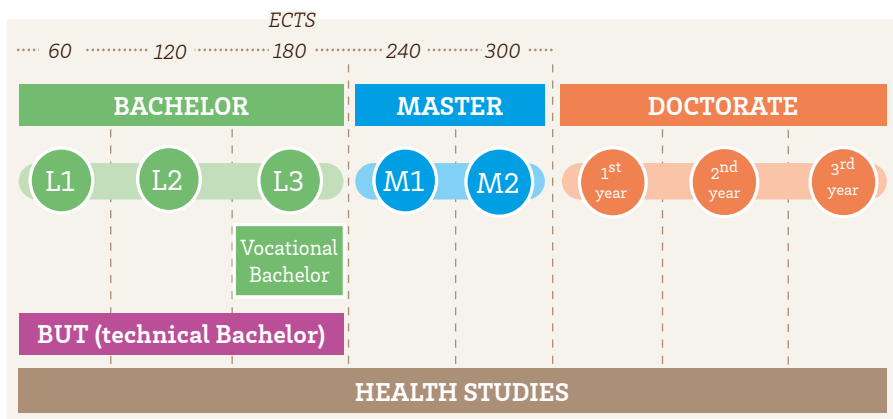
**2,800**  
administrative staf  
serving students

# Your studies



# The Higher Education System

France boasts an internationally renowned and highly accessible system of higher education. Universities confer national degrees (Bachelor, Master, Doctorate) that deliver ECTS, recognized by many countries in the European Union and around the world.



## The European Credit Transfer system (ECTS)

Each level is attained by acquiring ECTS. The academic year is divided into two semesters, and the validation of one semester is equivalent to 30 ECTS. The accumulation of credits at the higher education level depends on academic workload, number of course hours and course objectives.

### Find out more

For more information about the French Higher Education System and coming to study in France, consult the Campus France website.

→ [campusfrance.org/en](https://campusfrance.org/en)



# Registration

Whether you are an international student within an exchange programme (or scholarship programme) or outside of an exchange programme, please visit our website to learn all about registration requirements:

- › level of education
- › level of French
- › on-line application
- › papers and documents you may need
- › etc.

→ [u-bordeaux.fr/en/international/come-to-bordeaux/international-students](https://u-bordeaux.fr/en/international/come-to-bordeaux/international-students)

## Tuition fees 2023/2024

What will you pay as a student of the University of Bordeaux if you wish to register for an undergraduate degree, Master programme or Doctorate?

**You come from the European Union (EU), the European Education Area (EEA), Switzerland, Monaco or Québec (Canada):**

You pay the same fees\* as French students.

**You come from a country outside the regions indicated above:**

You can obtain a partial exoneration of the fees for the duration of your cursus and therefore pay the same fees\* as a French student.

Please note: the quality of the student's academic record and/or

the economic context of the country of origin will be taken into account with priority given to those from low income and lower middle income countries\*\*.

### For more information

→ [u-bordeaux.fr/en/education/admissions/tuition-fees](https://u-bordeaux.fr/en/education/admissions/tuition-fees)

### Please note:

You must also provide an expenditure statement for the CVEC (Student Life and Campus Contribution). The amount is fixed at 100€ (free for scholarship students).

*\* 170€ for an undergraduate programme, 243€ for a Master programme and 380€ for doctoral studies.*

*\*\* Subject to the deliberation of the Board of directors.*



# Come to France

## Passport/ID document

All internationals who wish to pass the French customs must have a valid passport. For EU citizens, an ID card is sufficient. Passports and ID documents must be valid for the duration of your stay.

## Visa

EU citizens and those from countries within the Schengen area do not need a visa. If you are from outside this zone, you will need a long stay student visa when staying for over 3 months in France, to be obtained prior to your arrival. In this case, please contact the Consulate General of France nearest to you for further information on how to apply and obtain your visa.

## Residence permit

EU citizens and those from countries within the Schengen area do not need a resident permit. If you are from outside the EU and Schengen area, please contact your closest Consulate General of France for information on the residence permit.

### United Kingdom

According to the agreement concerning the withdrawal of the U.K. from the European Union, British nationals must now follow the procedure applicable to those who are from outside the EU and the Schengen area (see above).



## Intra-European procedure

Students who have a resident permit from another EU country may, if part of a European programme or exchange, arrive and stay in France without requesting a visa or French resident permit.

This is only for a limited, non-renewable period and based on the condition that French authorities have been previously notified by the University of Bordeaux about the stay.

**More details available on the  
immigration webpage**

→ [u-bordeaux.fr/en/plan-ahead-for-your-stay-in-bordeaux](https://u-bordeaux.fr/en/plan-ahead-for-your-stay-in-bordeaux)

# Learning resources

## Digital work environment

Whether you are at home or out and about, you have access to a modern, high-performing educational environment: digital work spaces, information services, educational platforms... a large variety of technological tools are available that help you with your studies.

## Your email address

As soon as you register, the university will provide you with an email address that is valid for the duration of your studies. The format is as follows:  
*first name.second name@etu.u-bordeaux.fr*

This is your reference email and should be used for exchanges with your professors and the administrative & educational services of the university.

Get yourself connected with our ENT system and validate your campus pass account:  
<https://activation.u-bordeaux.fr>  
If you have any problems, don't hesitate to ask your Student Life Centre for help!

## Your on-line educational resources

You have access to a variety of educational resources that are helpful for your classes. These resources are available 24 hours a day at home or elsewhere and include: class material, self-assessments, on-line exercises, etc.

## Flagging Phishing and spam emails from Zimbra

If you receive fraudulent emails, please mark them as spam from your Zimbra institutional email account, so that your mailbox can improve their recognition.

Do you have doubts about the authenticity of an email? Do you suspect you have fallen victim to a scam?

Immediately notify the Digital Services Centre and forward any suspicious elements to

→ [csn@u-bordeaux.fr](mailto:csn@u-bordeaux.fr).

Remember to secure your computer and change your password immediately. Without this change, the attacker can continue to use the obtained access.

Also consider reporting the phishing attempt on the government website

→ [internet-signalement.gouv.fr](https://internet-signalement.gouv.fr)

# Aquipass Card

## a student card and much more...

When you arrive at the university, you are provided with your personal Aquipass card. This is your student passport that will be your source of ID and will let you use the many services on offer: taking out books at the library, eating at the university restaurants... You may also carry out certain purchases thanks to the electronic Izly card system.

### **Izly, how does it work?**

The Aquipass card has an integrated Izly card system. You must create an online account that can be credited in

a totally secure way (the Student Life Centre may help with setting it up if necessary). It's up to you then to decide whether to pay with your contactless student ID or your mobile phone. This may be used in the university cafeterias and restaurants thus avoiding the need to pay in cash.

### **How to credit the Izly card?**

You can credit your account starting from 5€ with just a few clicks, whether from your mobile app or the web. You can transfer money from your Izly account to your bank account at anytime.

→ [www.izly.fr](http://www.izly.fr)



# University libraries

*The place to carry out your study and research! Publications and reviews may be consulted in the library or borrowed. There is also a wealth of on-line resources (e-books, reviews, databases, etc.) available.*

The university libraries cover all the disciplines proposed by the university and are located throughout all the campuses.

Books may be borrowed with the Aquipass card and Internet access is available in all the libraries as well as group working spaces.

To find out how many seats are available in some libraries and to reserve a study room, download the mobile app "Affluences" or consult it via the University of Bordeaux mobile app, "U & me".



## Main university libraries

### Multidisciplinary

125 cours Alsace Lorraine – Bordeaux  
05 56 52 33 02

- › Monday to Friday: 8.30am – 7pm
- › Saturday: 9am – 6pm

### Life and Health Sciences

146 rue Léo Saignat – Bordeaux  
05 57 57 14 52

- › Monday to Friday: 8.30am – 10pm
- › Saturday: 9am – 6pm
- › Sunday\*: 1pm – 6pm

### Human Sciences

3 place de la Victoire – Bordeaux  
05 57 57 19 30

- › Monday to Friday: 8.30am – 7pm
- › Saturday: 9am – 6pm

### STAPS (Science and Techniques of Physical and Sport Activities)

12 avenue Camille Jullian – Pessac  
05 56 84 52 33

- › Monday to Friday: 8.30am – 6.30pm

### Science & Technology

Bât. B20 – allée Baudrimont  
Talence

05 40 00 89 89

- › Monday to Friday: 8.30am – 10pm
- › Saturday: 9am – 6pm
- › Sunday\*: 1pm – 6pm

### Law, Political Science, Economics

Closed for the academic year 2022/2023. To provide access to library resources during this closure, four welcome "spots" (in Bordeaux, Talence and Pessac) are available\*

### Libraries of Public law, Private law and History of law

Legal research building – avenue Léon Duguit – Pessac

05 56 84 25 70 / 05 56 84 85 76 /  
05 56 84 29 77

- › For opening/closing times, please consult our website

### Management Science

35 avenue Abadie – Bordeaux  
05 56 00 96 75

- › Monday to Friday: 8.30am – 6pm

### Institute of Vine and Wine Sciences

210 chemin de Leysotte – Villenave d'Ornon

05 57 57 58 21

- › Monday to Friday: 9am – 6pm

### Did you know?

From your home, you may directly consult the catalogue of information resources, reserve a book or a document, prolong your book loan with the research interface offered by the university, **Babord+**.

\* More information on libraries and opening times

› [bibliotheques.u-bordeaux.fr/Infos-pratiques/Horaires-et-calendriers](https://bibliotheques.u-bordeaux.fr/Infos-pratiques/Horaires-et-calendriers)

# Improve your French!

## Students within an exchange programme

You can benefit from French classes free of charge. These will help you follow and understand your specialty classes and also help your integration process within the campus and the city of Bordeaux.

## Students outside an exchange programme

- › **Classes may be taken with the Alliance Française:**  
126 Rue Abbé de l'Épée,  
33000 Bordeaux,  
05 56 79 32 80  
[af@alliance-bordeaux.org](mailto:af@alliance-bordeaux.org)

- › You may also contact Bordeaux Montaigne University, DEFLE (Study Department: French as a Foreign Language)  
05 57 12 44 43  
[defle@u-bordeaux-montaigne.fr](mailto:defle@u-bordeaux-montaigne.fr)

## MooFLE: "Moodle for French as a foreign language courses"

Improve your French before even coming to Bordeaux! All you have to do is connect to the online platform that provides all international students with free French language classes as well as advice and information for arriving and getting settled in Bordeaux.

**For more information, please consult**

- [u-bordeaux.fr/en/plan-ahead-for-your-stay-in-bordeaux](http://u-bordeaux.fr/en/plan-ahead-for-your-stay-in-bordeaux)

# Language centres

*Before setting off abroad, or simply to become more proficient, the university's three language centres can help you improve your foreign language skills throughout your course.*

- › Courses in English, Spanish, German and Italian... (depending on the language centre)
- › Guided self-learning available
- › English and Spanish conversation classes
- › Preparation for the following certificates: TOEIC, Cambridge, TOEFL, IELTS... There are resources available to prepare you for these exams. The language centre teams will direct you towards the certificates which are most appropriate for your plans.

**Contacts p. 91**



# Support for students with specific needs

*Students with disabilities or long illnesses, high-level sports students, confirmed artists, elected students, other profiles according to criteria (employees...), the university supports you.*

With the PHASE service, you can benefit from:

- › a local service
- › an evaluation of your needs and advice on your arrangements
- › a privileged contact in your training component.

Contact the PHASE service support officer on your campus as soon as the academic year starts.

**Contacts p. 91**

→ [u-bordeaux.fr/en/students-with-special-needs](http://u-bordeaux.fr/en/students-with-special-needs)

## **Personalised and progressive support throughout your journey:**

- › Educational support
- › Technical and human help
- › Flexible arrangements for exams
- › Flexible studies and schedule arrangements

To benefit from PHASE service support, you'll need to put together a file, and remember to bring proof of your situation.

Please note: reporting deadlines apply to sportsmen and women, artists, employees and hired workers.





# From university to your 1<sup>st</sup> job

*The career guidance centre will assist you with your study plans and help you consider your training pathway and future integration into the world of work.*

- › **Build your training pathway:** tools to help you find the right direction, workshops, interviews
- › **Develop your skills:** personalised advice with guidance counsellors - psychologists, and individual assessments
- › **Getting ready for professional life:** workshops, strategies for finding internships and employment, CV and cover letter, preparation for job interviews...
- › **Finding out about jobs:** resource areas and support, meetings with professionals.

Contacts p. 91

## Career guidance centre

05 57 57 18 04

[orientation.carrieres@u-bordeaux.fr](mailto:orientation.carrieres@u-bordeaux.fr)

→ [u-bordeaux.fr/en/career-guidance-and-joining-the-workforce](https://u-bordeaux.fr/en/career-guidance-and-joining-the-workforce)

## Job openings, jobs held, salary, qualification levels...

**You can find the key figures related to your course** in the surveys of the Observatoire de la formation et de la vie universitaire (Observatory for education and student life).

→ [u-bordeaux.fr/Formation/Enquetes-et-statistiques](https://u-bordeaux.fr/Formation/Enquetes-et-statistiques)



# Applying for disabled worker status during your studies

## What is disabled worker status?

Disabled worker status, known as RQTH in French (reconnaissance de la qualité de travailleur handicapé) is an administrative status that allows you to assert your rights and facilitates access to a wide range of education and employment measures for individuals with disabilities.

## Why apply?

Being recognised as a disabled worker isn't compulsory, however applying for this status does present a number of very important advantages, both during your studies and when looking for a job.

## How to apply?

Submit an application to the Maison Départementale des Personnes Handicapées (MDPH) of your place of residence. The decision from the MDPH does not mention the nature of the disability or illness, nor the degree of incapacity.

## Who can advise me at the university?

- › Students and unfunded doctoral candidates: Social workers at the Student Health Centre  
→ [ese@u-bordeaux.fr](mailto:ese@u-bordeaux.fr)
- › Doctoral candidates with funding: University disability contact person - correspondant.  
→ [handicap@u-bordeaux.fr](mailto:handicap@u-bordeaux.fr)

### For more information

- [u-bordeaux.fr/faire-reconnaitre-son-handicap](https://u-bordeaux.fr/faire-reconnaitre-son-handicap)



# Daily life



# Social

*During your studies, you can benefit from assistance if you are experiencing financial or social difficulties.*

## Places to listen

The social service assistants at the Student Health Centre or Crous are there to listen, welcome and support you. They provide information on the various types of assistance available in the event of financial, family or material difficulties.

**Contacts p. 91**

## If you have any questions

Regular information points are set up by the Student Life Centres on each campus to provide information on the university's financial aid.

Do not hesitate to come and meet with them for any questions you may have about eligibility criteria, or for assistance with your online application.

## Le comptoir d'Aliénor Social and solidarity food store

Students in financial difficulty can access food and hygiene products here at 10 to 30% of market prices.

→ [fede-atenaf.fr/le-comptoir-dalienor](https://fede-atenaf.fr/le-comptoir-dalienor)

Student Life Centres can also inform you about solidarity aid: food bank distributions, donation boxes, second-hand equipment at Etu'récup...

### More information

→ **contact:** [bve.social@u-bordeaux.fr](mailto:bve.social@u-bordeaux.fr)

→ [u-bordeaux.fr/en/campus/daily-life/social-and-financial-aid](https://u-bordeaux.fr/en/campus/daily-life/social-and-financial-aid)



# Finance

## Cost of living

A monthly budget of approximately 750€ is necessary for living in Bordeaux. With your student status, you have access to certain services such as: university cafeterias and restaurants, libraries, reduced transport fees, sports facilities, etc.

The first month the budget is triple the usual amount as there are extra costs linked to settling in your accommodation, registering for the university, signing contracts for electricity, the telephone...

## Opening a bank account in France

If you are staying in France for longer than 3 months, you may open a bank account. The process is quite simple: you must simply provide your passport (or equivalent ID document), your residence permit (if a non-EU citizen) and proof of residence.

You will need a bank account in your name for many reasons:

- › Financial aid for accommodation and Social Security reimbursements are paid automatically to a bank account;
- › A checkbook is required to pay rent or electricity. You may also choose to pay by direct debit or with a credit card.

## Finding a student job

In order to earn some pocket money, you may find yourself a part-time job ("petit boulot" in French). These jobs include childcare, tutoring (including languages classes), carrying out surveys, seasonal agricultural work (picking strawberries, apples, grapes, etc.). Work regulations vary according to the type of visa. In most cases, it is possible to work up to 60% of a full-time job, around 20h per week.

*Please note: if you have any financial problems, please contact the campus social workers (check "Your contacts")*

## Good to know

If you're under 26 years old and you live in Bordeaux or the surrounding suburbs, find out about the **"Youth Card"** that will give you access to many reductions for sporting, musical, cultural activities, etc.

### More information

→ [cartejeune.bordeaux-metropole.fr](http://cartejeune.bordeaux-metropole.fr)

# Example of monthly expenses



## Accommodation

- › Room in university residence .....250€
- › Student residences .....600€
- › Private studio downtown.....600€



## Lunch

- › Meals in university restaurant (2 meals/day).....186€
- › Breakfasts .....40€



## Transport

- › Tram/bus .....20,40€



## Miscellaneous fees

- › Maintenance, clothes .....100€
- › Supplementary insurance.....25€ par an
- › Hobbies and outings .....100€
- › Phone subscription .....20€
- › **Monthly total**.....1091€  
(with a private studio downtown)



## Additional expenses for the first month

- › Expenses about the accommodation + deposit and agencies fees (2 rent months approximately).....1500€
- › Student life and campus contribution (CVEC) .....100€
- › Registration fees (exemption for French government scholarship holders).....300 €
- › Liability insurance .....20 €
- › OFII tax .....60€
- › School supplies, books, handout .....100€
- › **1 month total**.....2080€  
(Monthly budget + additional expenses)

# Accommodation

*Finding accommodation in Bordeaux can be a challenge! If you do not have a university residence and have not found a solution before leaving your home country, you will need to search for accommodation in the private sector.  
Don't hesitate to contact the Student Life Centres for help!*

## Types of housing

- › University housing (Crous)
- › Social landlords (subject to means-testing)
- › Private owners and residences

## Financial aid for accommodation

As with French students, you may qualify for student accommodation aid from the CAF (Caisse d'allocations familiales – Family Benefits Agency). For this aid, you must be a student and have a rental contract in your name. For non-EU students, you will need a residence permit that is valid for over 3 months. You may complete your application online via the following website:

→ [caf.fr](http://caf.fr)

## Your arrival in Bordeaux

The university and the Welcome Offices are closed in August and on weekends. Students who will be staying in university residences must contact these residences before arriving to find out about opening dates and times. If the student residence is closed, you will need to book a night or two in a hotel or Youth Hostel.

## Security deposit/ Rental payment guarantee

When you rent an apartment, you must pay a security deposit equivalent to one or two months' rent, and have a guarantor (a person or organization who assures payment in the event of your insolvency).

→ [www.visale.fr](http://www.visale.fr)

## Accommodation insurance

Personal insurance is obligatory no matter your accommodation, whether you are staying with a friend or renting in the private sector. The insurance amount varies (between 40€ and 80€ per year) depending on the size of the apartment, the number of rooms and the risks insured (fire, theft, water damage, civil liability, damage to adjacent buildings, etc.).

## Student Life Centres

On the various campuses, they can help you finding accommodation, explaining contracts, applying for financial aid

→ [bve.logement@u-bordeaux.fr](mailto:bve.logement@u-bordeaux.fr)

Don't hesitate to ask for the Student Housing Guide

## Useful terms

- › **Studio:** 1 room apartment with integrated kitchen and bathroom/toilet



- › **F1 or T1 bis:** main room, separate kitchen and bathroom
- › **F2 or T2:** sitting room and separate bedroom, bathroom
- › **CC:** "Charges comprises" - utilities and other charges (water, electricity) included
- › **Equipé:** apartment with a fitted kitchen: oven, hot plates, fridge, sink
- › **Meublé:** furnished apartment with at least a bed, tables, chairs, sofa etc.

### Temporary accommodation

Auberge de jeunesse Barbey  
22 cours Barbey - 33800 Bordeaux  
05 56 33 00 70

→ [auberge-jeunesse-bordeaux.com](http://auberge-jeunesse-bordeaux.com)

### A few tips

- › Plan an extra budget for the first month for miscellaneous expenses
- › Beware of scams on housing websites
- › Never buy lists of accommodations or visits
- › Never pay money in cash and never pay the rent or the deposit before signing the lease.

→ [u-bordeaux.fr/en/campus/daily-life/finding-accommodation](http://u-bordeaux.fr/en/campus/daily-life/finding-accommodation)

### Good to know

- › **Etu'récup:** the campus recycling service which offers very affordable furniture, electronic appliances and dishes to help with your installation.

→ [eturecup.org](http://eturecup.org)

### Crous accommodation

- **International students outside an exchange programme (for graduate - Master/Doctoral students only)**

If you wish to apply for a room in a university residence, you must complete an application on the Internet site of the Crous (Regional Centre of Student Social Services) as of early July.

*For undergraduate (Bachelor) students, Crous accommodation is not available.*

- **International students within an exchange programme**

Erasmus students and international students within an Exchange Programme may apply for a room in the university residence as of early July. For this, you must contact the International Office for more information on the procedure to be followed.

→ [lescrous.fr](http://lescrous.fr)

→ [messervices.etudiant.gouv.fr](http://messervices.etudiant.gouv.fr)

### Studapart

The University of Bordeaux's dedicated housing platform with hundreds of exclusive offers: studios, flatshares, homestays... You may also benefit from personalised support throughout your stay/rent.

#### Contact

→ [u-bordeaux.studapart.com/en/](http://u-bordeaux.studapart.com/en/)

→ [booking@studapart.com](mailto:booking@studapart.com)

# Transport

*You may reach all the campuses of the University of Bordeaux with the tram or bus. The campuses are also equipped with "V3" stations (bike share system).*

## Reduction for public transport

### The "Pass Jeune" (Youth Pass)

Card which gives you access to the entire transport network (tram, bus, Bat<sup>3</sup> and parc-relais) if you are under 28 years old:

- › Annual "Pass Jeune": 20.40€ per month
- › Monthly "Pass Jeune": 34.40€

### The "Pass Jeune Annuel + V3" card

For an extra 1,60€ per month, in addition to the tram and bus, you have access to the V3 service, the bike share system in Bordeaux.

### The "10 Voyages Réduit - Étudiant" card

For occasional travel: 10 tickets at a reduced price (7.90€). You must present the TBM card (free of charge) with this ticket as it validates the price reduction. The ticket is available for students under 28 years old (35 years old for international students) and gives you unlimited access to the tram, bus and Bat<sup>3</sup> (the river shuttle) for an hour after initial validation of the ticket.

#### Reduced transport fees for students

→ [infotbm.com/en/rates/tickets-and-subscriptions](https://infotbm.com/en/rates/tickets-and-subscriptions)

#### Check the timetable and buy your tickets on-line

→ [infotbm.com](https://infotbm.com)

## Good to know

- › **Bordeaux Métropole** offers a solidarity-based pricing system with a fare adapted to resources  
→ [tarificationsolidaire.bordeaux-metropole.fr/Accueil.aspx](https://tarificationsolidaire.bordeaux-metropole.fr/Accueil.aspx)
- › **TBM** offers free bike loans and long-term rentals  
→ [portal.cykleo.fr/mamma](https://portal.cykleo.fr/mamma)

## Driving

### EU citizens

If your driving license was obtained in a European country you have the right to drive in France whilst respecting the French road code of course!

### Non-EU citizens

If you have a non-European driving license and you are settling in France, you have the right to use your license for one year maximum after the date of arrival in your main residence in France. This period cannot be extended and once it is finished your driving license must be exchanged for a French driving license.

# Harassment, Discrimination, and Violence

## How to react?

*Have you experienced or witnessed deliberate acts of physical harm, violence, discrimination, verbal or sexual harassment, sexist behaviour, threats, or intimidation?*

Don't be alone; professionals from the Listening, Monitoring, and Alert Unit (CEVS) are here to support you.

Composed of professional counsellors, the unit is committed to responding effectively and promptly to the situations brought to its attention, while strictly respecting anonymity. It also works to prevent and dissuade any abusive behaviour.

### Swift and appropriate support

#### 1. Alert

Once your request has been received by the CEVS coordinator, an appointment will be scheduled for you with external psychologists appointed by the university within a maximum of 48 to 72 working hours.

#### 2. Anonymity and confidentiality

The procedure guarantees your anonymity and the confidentiality of the information shared. Psychologists are bound by professional secrecy and will not disclose any information if you choose to remain anonymous.

#### 3. Assistance

External psychologists, who are university partners and professionals trained in listening and support,

will take care of you. During the appointment at a neutral location, these professionals will identify your needs and the steps to be taken in response to the situation. Assistance in gathering evidence will be offered.

#### 4. Information on procedures

You will be provided with information on the available procedures. If you choose to lift your anonymity, CEVS will forward your report or inform the relevant services about your situation, in order to take any necessary interim measures and initiate disciplinary or legal proceedings, as appropriate.

#### 5. Support

› Following the appointment, you may be referred for psychological and/or medical follow-up..

→ *contact CEVS: [celluledeveille.etudiant@u-bordeaux.fr](mailto:celluledeveille.etudiant@u-bordeaux.fr)*

→ *[u-bordeaux.fr/en/harassment-violence-and-discrimination](https://u-bordeaux.fr/en/harassment-violence-and-discrimination)*

# Healthcare

## Social security affiliation

Depending on your situation, you will have to:

- › either join the French health insurance system to benefit from health coverage
- › or be the holder of a European Health Insurance Card (EHIC). In this case, the health insurance of your country of origin will cover your health expenses and refund you consequently.

Please note that for a stay of less than 3 months, it is not possible to benefit from social security in France. Health insurance is strongly recommended.

### For more information

→ [etudiant-etranger.ameli.fr](http://etudiant-etranger.ameli.fr)

*For help with registration for French health insurance, contact your Student Life Centre.*

## In order to purchase most medication

You must present a medical prescription to the pharmacist. For emergencies at night, weekends and holidays, there are doctors and pharmacists on duty. The list of these contacts may be found in pharmacies, the local press and police stations.

## Complementary health insurance

In order to complete the reimbursement of your health expenses, which are not entirely covered by social security, you can subscribe to a complementary health insurance policy via the organisation of your choice.

## Repatriation and civil liability insurance

You must subscribe for repatriation and civil liability insurance to cover any costs and/or damages that could be caused during your stay in France.

Contact the "Mutual Health Insurances" for students which propose this type of insurance and may inform you on how to subscribe.



# Student Health Centre

## The place to go for medical care

To stay in good health while you're studying in France, feel free to visit the Student Health Centre. Teams of medical professionals will welcome you, give you advice and information and direct you depending on your needs: general medicine, sexual health, psychological support, nursing care, vaccinations, certificates of no contraindication to sport, etc., all without having to pay any fees (full third party payment).

The Student Health Centre also offers workshops on cooking, stress management and mental health first aid training, to make the most of your university year.

## Please note

Appointments can be made via [Doctolib.fr](https://www.doctolib.fr) (link directly accessible from our website) or by telephone on 05 33 51 42 00.

## Contact

- › **Pessac**  
22 avenue Pey-Berland  
Pessac  
Tram B - Doyen Brus  
05 33 51 42 00
  - › Monday to Thursday:  
9am - 7pm  
Friday: 9am - 5pm
  - › Open during the All Saints' Day holiday, and winter and spring holidays
  - › Closed during the Christmas holidays and for 4 weeks during the summer holidays.
- [sante-etudiants-bdx.fr](https://sante-etudiants-bdx.fr)
-  [espace\\_sante\\_etudiants\\_bdx](https://www.instagram.com/espace_sante_etudiants_bdx)



# Catering

## Bon appétit !

*University restaurants are located throughout the campuses as well as in the city centre. They offer healthy and balanced meals.*

*With your Aquipass card you can pay for your meals, snacks, drinks in all the university restaurants and cafeterias. Your card also enables you to collect loyalty points (for more information on the loyalty programme please consult: [crous-bordeaux.fr](http://crous-bordeaux.fr))*

### Carreire campus (Bordeaux)

**Le Mascaret – Resto U' + Crous Market'**

146, rue Léo Saignat

### Bordeaux and Bordeaux- Bastide campus

**Le 98 – Crous Cafet' + Crous Market'**

98, quai des Chartrons

**La Bastide – Resto U' + Crous Market'**

15, avenue d'Abadie

**Le Capu – Resto U'**

16, rue Jules Guesde

**Le Musée – Crous Market'**

Place de la Victoire

### Peixotto campus (Talence)

**La Soucoupe – Crous Market'  
+ Moovie Market'**


next to building A21





#### **The Campus food hampers:**

Every week you can order and pick up on your campus a basket of fresh, seasonal and local fruit and vegetables (price between €5 and €7.5).

**For more information**

→  [@petits\\_paniers\\_campus\\_bdx](https://www.instagram.com/petits_paniers_campus_bdx)

**"À TABLE!"** with the food trucks that come to your campuses every week.

  @bveunivbordeaux



## Montesquieu campus (Pessac)

(S)pace' Campus – Resto U' + Crous Market' + Crous & Go' + Crous Relax'

18, avenue de Bardanac

Le Crous Moovy Market'

23, esplanade des Antilles

Le Forum – Crous Cafet' + Crous Market'

2, avenue Léon Duguit

L'IEP – Crous Cafet'

11, allée Ausonne

Resto U' n°2 + Crous Market'

Avenue des Facultés

Le Veracruz – Crous Cafet'

Avenue Maine de Biran

For opening days and times

→ [crous-bordeaux.fr](http://crous-bordeaux.fr)

## Good to know

- › With your **Aquipass card** you can pay for your meals, snacks, drinks in all the university restaurants and cafeterias. You may also pay with the Izly app on your telephone if you've forgotten your student card.
- › **Tight budget?** Contact the social grocery based on the Talence campus where very affordable food and hygiene products may be purchased:  
→ [comptoir.dalienor@gmail.com](mailto:comptoir.dalienor@gmail.com)
- › Try out the Foodtrucks on the different campus sites - a variety of snacks available at an affordable price!
- › Heat up your meals and have lunch in the **student centres** located on the different campus sites:
  - Talence campus:  
ground-floor A22, A21 and B6 buildings
  - Pessac campus:  
Bât A, entrance A
  - Victoire campus:  
Broca Class A28
  - Carreire campus:  
Maison des Étudiants

# Student jobs

## at the university

*Are you looking for a university student job for a few hours per week or month?*

The university's departments regularly use student employees to boost their workforce in support and assistance roles: reception, library work, mentoring, etc.

Refer to the web page "student jobs" on the university website and follow us on social media to make sure you do not miss the latest vacancies.

→ [u-bordeaux.fr/en/campus/daily-life/trouver-un-job-etudiant](https://u-bordeaux.fr/en/campus/daily-life/trouver-un-job-etudiant)







# Campus life



# Culture(s)

*Practice, share, enjoy, debate, create, feel... So many unique moments on offer throughout your university year. Let yourself be carried away by the many and eclectic cultural events on offer.*

A programme of shows, concerts, exhibitions and artistic residencies on your campuses...

Numerous partnerships with cultural venues in the Bordeaux metropolitan area and on local campuses.

## A la carte workshops

Would you like to develop your pencil skills, discover the keys to good photography, try your hand at a trapeze act, play with words, share your favourite readings, or take part in a masterclass with a professional dancer from the Opéra?

Let yourself be tempted by our many free practical arts workshops, all year round, half-yearly or weekend courses.

On your campus too

- › free access to pianos
- › practice spaces accessible under certain conditions
- › student associations with cultural projects
- › the MEB, the university's museum of ethnography, offering exhibitions, workshops, lectures, etc.
- › special support for student artists through the PHASE service (see p.64)
- › a "Culture, Arts, Sciences, Society" department to provide you with information and support for your own projects.

### Follow us



@CultureUnivBx

→ [u-bordeaux.fr/en/campus/culture](http://u-bordeaux.fr/en/campus/culture)

## Bringing together arts and sciences

- › A dialogue between science and society guiding "Les Rencards du savoir", monthly meetings on the issues that are shaping our societies..
- › Dive into the exploration of the university's experimental forest with a series of podcasts, videos and stories told alongside the researchers and artists invited.
- › Many projects to discover, particularly during the FACTS festival, dedicated to this sometimes surprising encounter between the arts and sciences, rich in knowledge, insight and creativity.



# Sport

*Want to get fit? Get healthy? Or maybe even more... want to represent the University of Bordeaux in national competitions?*

## **An "à la carte" sports offer**

Whether you are an experienced sportswoman or an occasional sportsman, you are spoilt for choice to recharge your batteries or improve your skills in the nearly 50 disciplines on offer.

You can choose between supervised practice (evaluated or not), training courses and outings in the great outdoors or free practice alone or with friends.

## **Do you want to be on the podium?**

Depending on your performance and your desires, different levels of practice allow you to participate in university competitions:

- › Academic championships at the regional level, in which teams from the campus sports departments compete
- › French and European championships, in which the best athletes from the University of Bordeaux Sports Association (ASUBx) compete.

**For more information, please contact the sports office on your campus**

→ [u-bordeaux.fr/en/campus/sports](http://u-bordeaux.fr/en/campus/sports)

**Follow us:**

📷 [@sport\\_univbordeaux](https://www.instagram.com/sport_univbordeaux)

📍 [Sport université Bordeaux](https://www.facebook.com/Sport.universite.Bordeaux)



© Michał Waliszka

## **High-level practice**

The university favours the dual sporting and academic project of top, very good and good-level athletes.

→ [u-bordeaux.fr/en/campus/sports/top-level-sports](http://u-bordeaux.fr/en/campus/sports/top-level-sports)

# Citizenship and commitment

*Volunteering, associations, elective office... There are many opportunities to get involved at the University of Bordeaux. Surely there is one for you!*

## Join a student association

Make campus life more dynamic by joining one of the university's associations or create your own. Cultural, sporting, humanitarian or course-based, there are more than 130 student associations to choose from!

## Run for office

You can get involved by standing as a candidate and take part in the decisions that affect you.

Student representatives participate in the different bodies of the university, in the drafting and adopting of all important decisions, in all fields: educational, student life, general organisation, resources, etc.

*To learn more about the different forms of involvement at the university, contact the Student Life Centre on your campus*

**Contacts p. 91**

→ [u-bordeaux.fr/en/campus/getting-involved](https://u-bordeaux.fr/en/campus/getting-involved)

**Get informed, give your opinion, propose your ideas to improve campus life on the university's participatory platform.**

→ [participation.u-bordeaux.fr](https://participation.u-bordeaux.fr)

## Take action

- › Join the campus life committees working groups.
- › Bring your projects to life for the community with the Student Participatory Budget.
- › Find out about the mechanisms for maximising your commitment.

**For more information**

Contact your Student Life Centre

**Contacts p. 89**


## Ambassador of transitions: why not you?

*The university contributes to the construction of a sustainable and inclusive society.*

24 concrete commitments have been adopted to accelerate change and support the main challenges of the environmental and societal transition.

A network of student ambassadors has been deployed since 2021 to promote best practices and engagement and to animate the communities.

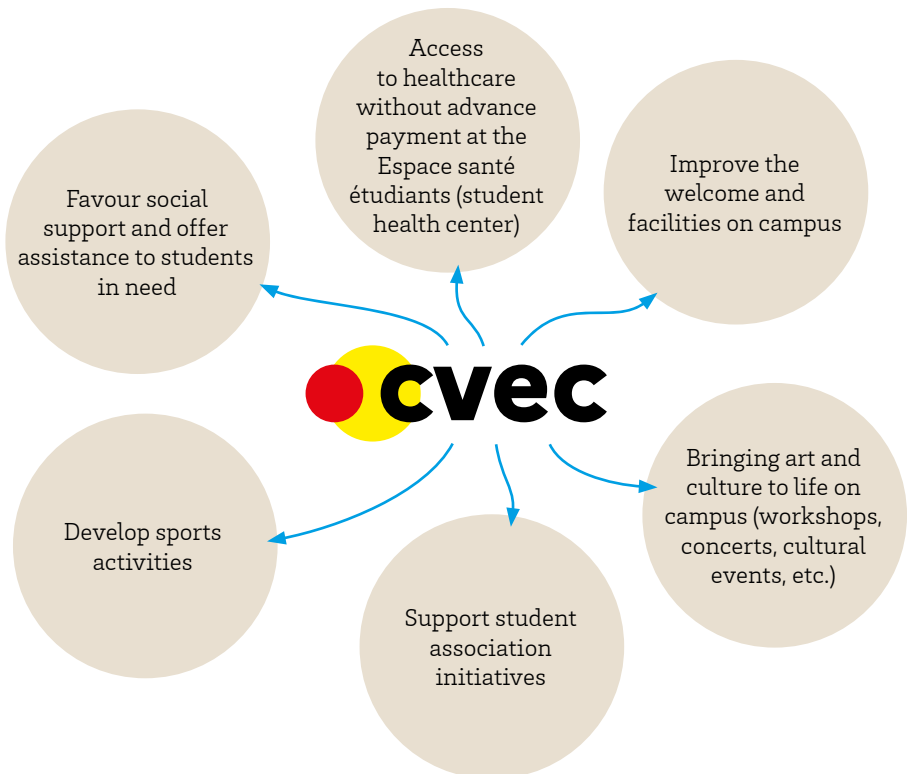
If you want to get involved, contact them!

→  [ambassadeur.icestransitions](https://www.instagram.com/ambassadeur.icestransitions)

# Student and Campus Life Contribution (CVEC)

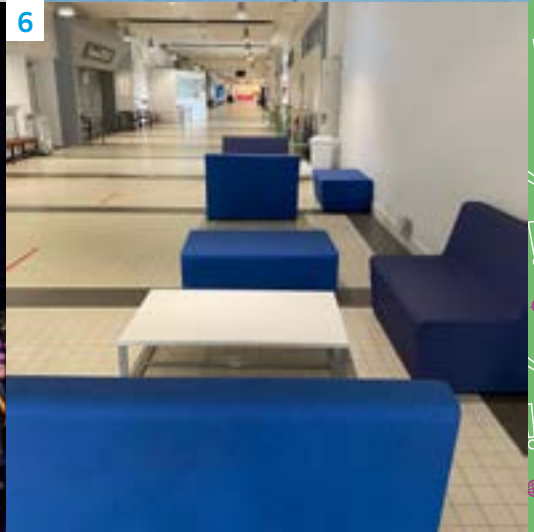
*Compulsory for all students enrolling in a higher education establishment, the CVEC is used to create or consolidate services or projects aimed at improving study conditions and campus life.*

## What is the purpose of the CVEC?



## CVEC on campus means, for example...

- 1 More than 60 physical activities on offer
- 2 Free arts workshops
- 3 Self-service sanitary protection dispensers
- 4 On-campus events such as "Fête! la rentrée"
- 5 Support for the Mayday Student Music Festival
- 6 A building's corridor fitting



# Your contacts



Espace  
de  
convivialité



# At your arrival

## Student Life Centres

They welcome all Bachelor, Master and Doctoral students.

They offer social support and are the gateway to student associations. They also organize numerous cultural, sports and integration activities.

### Peixotto and Bordes Campus (Talence)

*bve.talence@u-bordeaux.fr*  
05 40 00 60 38

### Victoire and Carreire Campus (Bordeaux)

*bve.bordeaux@u-bordeaux.fr*  
05 57 57 10 50

### Montesquieu Campus (Pessac)

*bve.pessac@u-bordeaux.fr*  
05 56 84 62 60  
05 56 84 62 61  
05 56 84 62 90

## International office

For international students (Bachelor, Master) within an exchange programme.

### Peixotto and Bordes Campus (Talence)

Your studies:

- › Science and Technology
- › IUT de Bordeaux: Science and Technology
- › Institute of Vine and Wine Sciences (ISVV)
- › Evering Institute - Mérignac

#### **Anna Gerykova**

*incoming-talence@u-bordeaux.fr*  
05 40 00 83 33

### Victoire and Carreire Campus (Bordeaux)

Your studies:

- › Health Sciences & ISPED
- › Human Sciences
- › STAPS
- › INSPE: School of Education

#### **Pauline Carreau and Inchirah Mousset**

*incoming-carreire@u-bordeaux.fr*  
05 57 57 13 01  
05 57 57 46 77

### Montesquieu Campus (Pessac)

Your studies:

- › Law, Political Science, Economics, Management
- › IUT de Bordeaux: Management

#### **Marine Moncaut and Manon Lacanal**

*incoming-pessac@u-bordeaux.fr*  
05 56 84 86 39  
05 56 84 29 67

## For PhD students only

### Graduate research school

Registration, changes that may occur during the PhD programme, examination procedures, awarding of the PhD degree, recruitment processes within the doctoral schools, etc.

- › 351 cours de la Libération, 33400 Talence  
Building A33, 1<sup>st</sup> floor  
→ [college-doctoral.u-bordeaux.fr/en](http://college-doctoral.u-bordeaux.fr/en)

### Welcome Centre for International Researchers

This centre provides support and advice for those at Doctorate level and above (PhD students, post doctorate students, visiting professors etc.).

- [accueil.chercheurs@u-bordeaux.fr](mailto:accueil.chercheurs@u-bordeaux.fr)  
05 40 00 68 73

## Checklist

*All you need to know to feel at home!*

### 1/ BEFORE ARRIVING

- Read the guide! Especially the "Your studies" section. It covers what you need to know and do for the application/registration procedures, immigration, accommodation, budget, etc.

Connect to the Buddy Programme website and find yourself a mentor to help with your integration process:

→ [parrainage.u-bordeaux.fr](http://parrainage.u-bordeaux.fr)

### 2/ FIRST FEW WEEKS

- Introduce yourself to the "Welcome Contacts"!
- Find and get settled in your accommodation
- Get yourself connected with our ENT system and validate your campus pass account
- Open a bank account

- Sign up for sports and cultural activities
- Take out a subscription with the TBM, the Public Transport Network of Bordeaux
- Find out about French classes
- Don't forget to validate your long-stay visa (VLS-TS) with the OFII within 3 months of arriving in France (<https://administration-etrangers-en-france.interieur.gouv.fr/particuliers/#/>)

### 3/ FIRST FEW MONTHS

- Contact your student associations of interest and get involved!
- Find out about Bordeaux and its surrounding region and make the most of your stay in one of the most beautiful places in France if not the world!

# All your contacts

## Student Health Centre

22 avenue Pey Berland - Pessac  
05 33 51 42 00

Tram B, Doyen Brus. Monday to Thursday,  
from 9 am to 7 pm, Friday from 9 am to 5 pm

→ [sante-etudiants-bdx.fr](mailto:sante-etudiants-bdx.fr)

+ Make an appointment :

→ [Doctolib/Espace Santé Etudiants](mailto:Doctolib/Espace Santé Etudiants)

## Crous Social Service

05 56 33 96 15

[service.social@crous-bordeaux.fr](mailto:service.social@crous-bordeaux.fr)

From 8:30am to 12:30pm and from 1:30pm  
to 4:30pm

Make an appointment: [crous-bordeaux.fr/  
social/prendre-rendez-vous](http://crous-bordeaux.fr/social/prendre-rendez-vous)

## Career Guidance Centre

Campus Victoire, Building F, 1st floor

Open with or without appointment:

› Mondays, Tuesdays and Thursdays  
from 1 to 6 pm

› Wednesday from 9am to 6pm

05 57 57 18 04

[orientation.carrieres@u-bordeaux.fr](mailto:orientation.carrieres@u-bordeaux.fr)

## Student vice-president

Marie-Juliette Caponni

[vpe@u-bordeaux.fr](mailto:vpe@u-bordeaux.fr)

## Ambassadors for Transitions

[transitions@u-bordeaux.fr](mailto:transitions@u-bordeaux.fr)

📍 [ambassadeur.icestransitions](mailto:ambassadeur.icestransitions)

## Carreire Campus (Bordeaux)

### • Espace 5 D

### • Health College

[assistance.college.sante@u-bordeaux.fr](mailto:assistance.college.sante@u-bordeaux.fr)

Espace vie universitaire (close to the  
university library)

### • Student life center › 05 57 57 10 50

[accueilbve.carreire@u-bordeaux.fr](mailto:accueilbve.carreire@u-bordeaux.fr)

### • Student vice-president at the campus life council

Romain Brégéras

[vpe.bordeaux@u-bordeaux.fr](mailto:vpe.bordeaux@u-bordeaux.fr)

### • PHASE service / specific needs

05 57 57 56 84

[marie.le-parc@u-bordeaux.fr](mailto:marie.le-parc@u-bordeaux.fr)

### • Culture › 05 47 30 42 96

[culture-bordeaux@u-bordeaux.fr](mailto:culture-bordeaux@u-bordeaux.fr)

### • Campus life hub

### • Foyer › Free-access coworking space 8am-10pm

### • Sports › 05 57 57 14 03

[sport-sante@u-bordeaux.fr](mailto:sport-sante@u-bordeaux.fr)

### • Administration (1<sup>st</sup> floor)

### • International office › 05 57 57 13 01

[outgoing-carreire@u-bordeaux.fr](mailto:outgoing-carreire@u-bordeaux.fr)

(outgoing students)

[incoming-carreire@u-bordeaux.fr](mailto:incoming-carreire@u-bordeaux.fr)

(incoming students)

### • Building ED

### • Language centre › 05 57 57 95 33

### • Building Faculty of Pharmacy

### • Doctoral School Health and Life Sciences

[ed-svs@u-bordeaux.fr](mailto:ed-svs@u-bordeaux.fr)

### • Maison des étudiants (close to the Mascaret university restaurant)

## Victoire Campus (Bordeaux)

- **Courtyard**
- **Student life centre**  
05 57 57 19 56  
accueilbve.victoire@u-bordeaux.fr
- **Student vice-president at the campus life council**  
vpe.victoire@u-bordeaux.fr
- **Sports**  
05 57 57 56 53  
sport-sh@u-bordeaux.fr
- **Court Leyteire**
- **Human sciences College**  
scolarite.sciences-homme@u-bordeaux.fr
- **PHASE service / specific needs**  
05 57 57 18 48  
phase@u-bordeaux.fr
- **Culture** > 05 57 57 19 96  
culture-bordeaux@u-bordeaux.fr
- **Language centre** > 05 57 57 18 86  
espacelangues.victoire @u-bordeaux.fr
- **International office**  
05 57 57 13 01  
outgoing-carreire@u-bordeaux.fr (outgoing students)  
incoming-carreire@u-bordeaux.fr (incoming students)
- **Campus nurse**  
05 57 57 19 07
- **Building G**
- **Doctoral School Society, Politics, Public Health**  
edsp2@u-bordeaux.fr  
Jérôme Alier

## Montesquieu campus (Pessac)

- **Building B**
- **Doctoral School Law**  
ed-droit@u-bordeaux.fr
- **Doctoral School Economic Sciences, Management and Demography**  
ed-ecoges@u-bordeaux.fr
- **Student life centre** > 05 56 84 62 61  
bve.pessac@u-bordeaux.fr
- **Student vice-president at the campus life council**  
Jérôme Alier  
vpe.pessac@u-bordeaux.fr
- **PHASE service / specific needs**  
phase.pessac@u-bordeaux.fr  
05 56 84 29 28 / 85 08
- **International office**  
05 56 84 86 39  
outgoing-pessac@u-bordeaux.fr (outgoing students)  
incoming-pessac@u-bordeaux.fr (incoming students)
- **Culture** > 05 56 84 25 59  
culture-pessac@u-bordeaux.fr
- **Campus nurse**  
05 56 84 54 75 ou 06 21 11 09 47  
florence.touchard@u-bordeaux.fr
- **Building B (Entrance F)**
- **Language centre**  
Bât. F, 2<sup>e</sup> étage
- **Amphitheater building**
- **Law, Political sciences, Economics and Management College**  
assistance.iaweb.dspeg@u-bordeaux.fr
- **Sports** > 05 56 84 85 17  
sport-dspeg@u-bordeaux.fr

## Peixotto & Bordes campus (Talence)

- **Building A1**
- **Doctoral School Physics and Engineering**  
edoc.spi@u-bordeaux.fr
- **Bât. A 10**
- **Doctoral School Chemical Sciences**  
secretariat-edsc@u-bordeaux.fr
- **Building A22**
- **Science and technologies College**  
Inscription.administrative.tec@u-bordeaux.fr
- **Student services desk** › 05 40 00 84 84  
guichet.unique@u-bordeaux.fr
- **Student life centre** › 05 40 00 84 84  
bve.talence@u-bordeaux.fr
- **PHASE Service / specific needs**  
**Undergraduate / DAEUB / Preparatory class** › 05 40 00 35 59  
anouk.soultanian@u-bordeaux.fr  
**Graduate** › 05 40 00 30 83  
denis.clanet@u-bordeaux.fr
- **Sports** › 05 40 00 63 69  
sport-st@u-bordeaux.fr
- **Campus nurse** › 05 40 00 36 81
- **Building A21**
- **Student vice-president at the campus life council**  
Sacha Duperret  
vpe.talence@u-bordeaux.fr
- **Culture** › 05 40 00 24 75  
culture-talence@u-bordeaux.fr
- **Language centre** › 05 40 00 29 78  
dllc-st@u-bordeaux.fr
- **Building A30 - LaBRI**
- **Doctoral School Mathematics and Computer Science**  
edmi@u-bordeaux.fr
- **Building A33**
- **Graduate Research School**  
05 40 00 24 46  
direction.collegeED@u-bordeaux.fr

- **Bonnefont Castle (A37)**
- **International office** › 05 40 00 83 33  
outgoing-talence@u-bordeaux.fr  
(outgoing students)  
incoming-talence@u-bordeaux.fr  
(incoming students)
- **Building B5**
- **Doctoral School Sciences and Environments**  
edoc.se@u-bordeaux.fr

## Other campuses

- **Tuition**
- **ISVV**  
isvv-scolarite@u-bordeaux.fr
- **INSPE**  
assistance.iaweb@inspe-aquitaine.fr
- **IUT Bordeaux Bastide** › 05 56 00 95 54  
fvu-bastide@iut.u-bordeaux.fr
- **IUT Gradignan** › 05 56 84 57 20  
fvu-gradignan@iut.u-bordeaux.fr
- **International office**
- **IUT Bastide** › 05 56 84 86 39  
outgoing-pessac@u-bordeaux.fr  
(outgoing students)  
incoming-pessac@u-bordeaux.fr  
(incoming students)
- **INSPE** › 05 57 57 13 01  
outgoing-carreire@u-bordeaux.fr  
(outgoing students)  
incoming-carreire@u-bordeaux.fr  
(incoming students)
- **UF Biologie, ISVV, IUT Gradignan**  
05 40 00 83 33  
outgoing-talence@u-bordeaux.fr  
(outgoing students)  
incoming-talence@u-bordeaux.fr  
(incoming students)
- **Campus nurse**
- **Bordeaux-Bastide**  
05 56 00 96 45 or 06 21 11 09 47

## • **PHASE service / specific needs**

- **ISVV and INSPE** > 05 40 00 30 83  
denis.clanet@u-bordeaux.fr
- **STAPS** > 05 56 84 52 40  
julie.cornaton@u-bordeaux.fr (STAPS)
- **IUT de Bordeaux** > 05 56 84 58 92  
fabienne.eydon@u-bordeaux.fr

## • **Sports**

- **IUT de Bordeaux, site de Gradignan**  
15 rue Naudet - Gradignan  
05 56 84 57 38  
sports@iut.u-bordeaux.fr
- **INSPE** > 05 56 17 34 00  
pascal.grassetie@u-bordeaux.fr
- **IUT de Bordeaux site Bastide, Pôle universitaire de sciences de gestion Bordeaux Bastide**  
05 56 84 85 17
- **ISVV** > 05 40 00 63 69  
Bât A21 - campus Talence  
sport-st@u-bordeaux.fr

## **Agen campus**

- **Tuition IUT de Bordeaux**  
fvu-agen@iut.u-bordeaux.fr
- **International office**  
BUT GACO  
outgoing-pessac@u-bordeaux.fr  
(outgoing students)  
BUT QLIO  
outgoing-talence@u-bordeaux.fr  
(outgoing students)
- **PHASE service / specific needs**  
phase@u-bordeaux.fr  
IUT de Bordeaux > 05 56 84 58 92  
DUSA > 05 40 00 35 59  
INSPE > 05 40 00 30 83  
DEJA > 05 56 84 85 08
- **Student life centre**  
IUT de Bordeaux et DUSA  
05 40 00 84 84  
bve.talence@u-bordeaux.fr

DEJA > 05 56 84 62.61  
bve.pessac@u-bordeaux.fr

- **Culture** > 05 56 84 25 59  
culture-pessac@u-bordeaux.fr

## • **Sports**

Responsable : Hervé Teissier  
06 87 83 54 36  
herve.teissier@u-bordeaux.fr

## • **Campus nurse**

Site du Pin > 05 53 77 57 07  
Site Michel Serres > 05 53 48 06 40

## **Périgueux campus**

- **Tuition IUT de Bordeaux**  
05 53 02 58 54  
fvu-perigueux@iut.u-bordeaux.fr
- **International office**  
BUT Carrières sociales et Tech. de Co  
outgoing-pessac@u-bordeaux.fr  
(outgoing students)  
incoming-pessac@u-bordeaux.fr  
(incoming students)  
BUT Génie chimique et Génie biologique  
outgoing-talence@u-bordeaux.fr  
(outgoing students)  
incoming-talence@u-bordeaux.fr  
(incoming students)
- **PHASE service / specific needs**  
phase@u-bordeaux.fr  
IUT de Bordeaux > 05 56 84 58 92  
DEJEP > 05 40 00 35 59  
INSPE > 05 40 00 30 83
- **Student life centre** > 05 56 84 62 61  
bve.pessac@u-bordeaux.fr
- **Culture** > 05 56 84 25 59  
culture-pessac@u-bordeaux.fr
- **Sports**  
Responsable : Marc Gabaud  
05 53 02 58 52  
marc.gabaud@u-bordeaux.fr
- **Campus nurse**  
Campus Périgord  
05 53 02 60 94 / 06 24 61 41 69

# Practical information

## Emergency numbers

- › **SAMU** › 15
- › **Firefighters** › 18 or 112
- › **Police** › 17
- › **SOS Doctors** › 05 56 44 74 74 or 3624
- › **Anti-Poison Centre** › 05 56 96 40 80
- › **Social Emergencies** › 115
- › **SOS Friendship** › 05 56 44 22 22
- › **SOS Suffering** › 05 56 67 00 71
- › **SOS Post Abortion** › 0 825 33 18 19
- › **SOS Sexual Violence** › 3919
- › **Suicide Listening Service** › 3114 (24h/7)
- › **Victim Support Service** › 05 56 01 28 69
- › **Emergency Welcome Centre for victims of violence** › 05 56 79 87 77
- › **Bordeaux Police Station** › 05 57 85 77 77
- › **Talence Police Station** › 05 57 35 77 22
- › **Pessac Police Station** › 05 57 26 38 70
- › **University of Bordeaux Emergency**  
Talence: 05 40 00 89 79 (24h/24)  
Pessac: 05 56 84 29 88  
Victoire: 05 57 57 30 50  
Carreire: 05 57 57 14 50 (24h/24)
- › **Lost or stolen credit card**  
0 892 705 705 (7 days/7 et 24h/24)

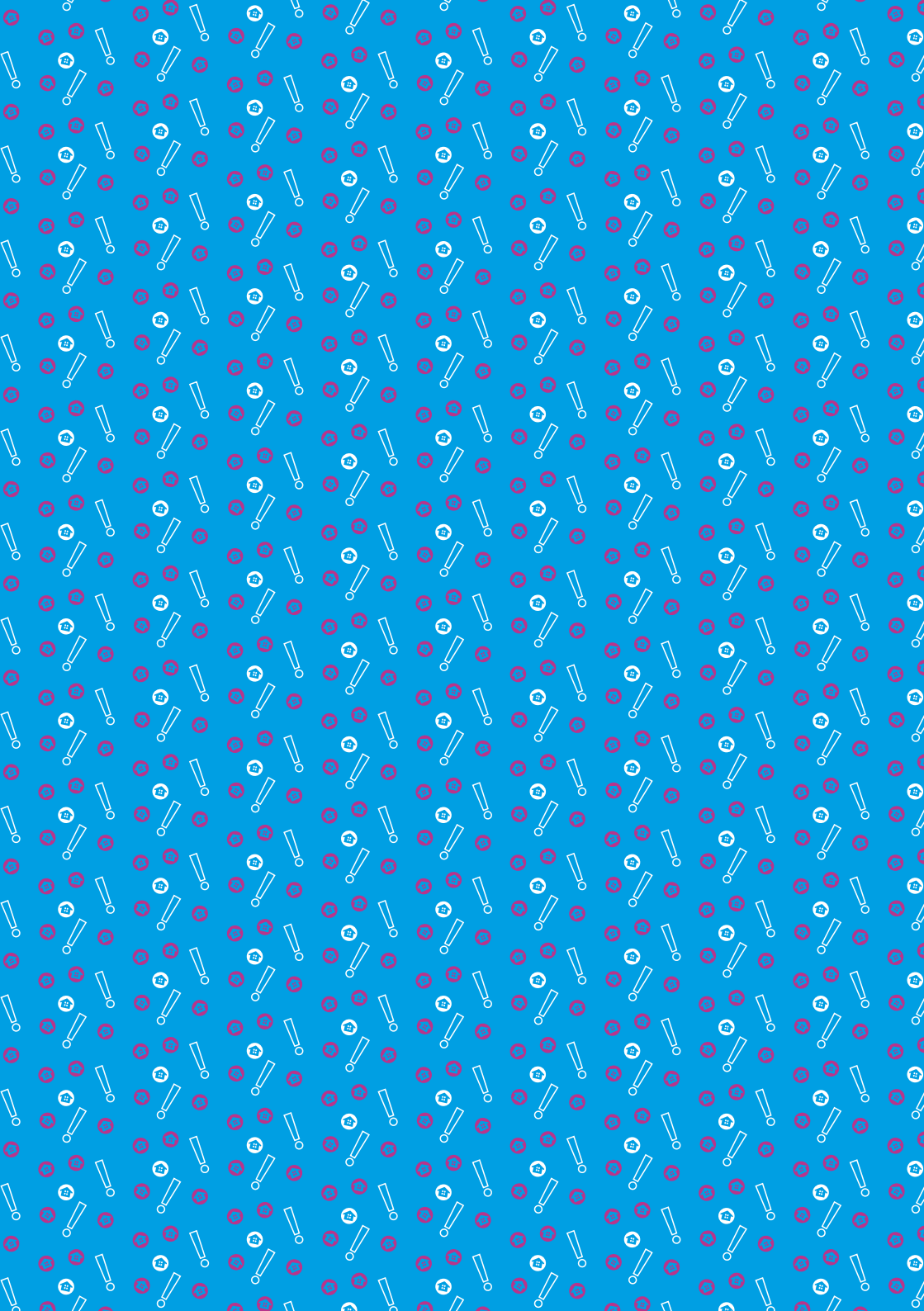
## Pharmacies open 24h/24h

- › **Pharmacie des Capucins**  
30 place des Capucins  
33000 Bordeaux
- › **Pharmacie des Grands Hommes**  
1 place des Grands Hommes  
33000 Bordeaux

Find the nearest **on-call pharmacy** › 32 37

## French national holidays

- › **Halloween**  
1<sup>st</sup> November
- › **1918 Remembrance Day**  
11<sup>th</sup> November
- › **Christmas**  
25<sup>th</sup> December
- › **New Year's Day**  
1<sup>st</sup> January
- › **Easter Monday**  
1<sup>st</sup> April 2024
- › **Worker's Holiday**  
1<sup>st</sup> May
- › **1945 Victory**  
8<sup>th</sup> May
- › **Feast of the Ascension**  
9<sup>th</sup> May 2024
- › **Whit Monday**  
20<sup>th</sup> May 2024
- › **National Holiday**  
14<sup>th</sup> July
- › **Assumption**  
15<sup>th</sup> August







Bordeaux  
the best!

[u-bordeaux.fr/Campus/Boutique](https://u-bordeaux.fr/Campus/Boutique)



En savoir plus  
For more information  
[u-bordeaux.fr](https://u-bordeaux.fr)

Et pour tout savoir  
sur la rentrée  
Everything you need to know  
about back-to-school

[hello.u-bordeaux.fr](https://hello.u-bordeaux.fr)

 @univbordeaux

 univbordeaux

 universitedebordeaux

**Université de Bordeaux**  
351 cours de la Libération  
33405 Talence Cedex



université  
de **BORDEAUX**

